

SMOKING BANS

IMPACT ON GAMING REVENUE.

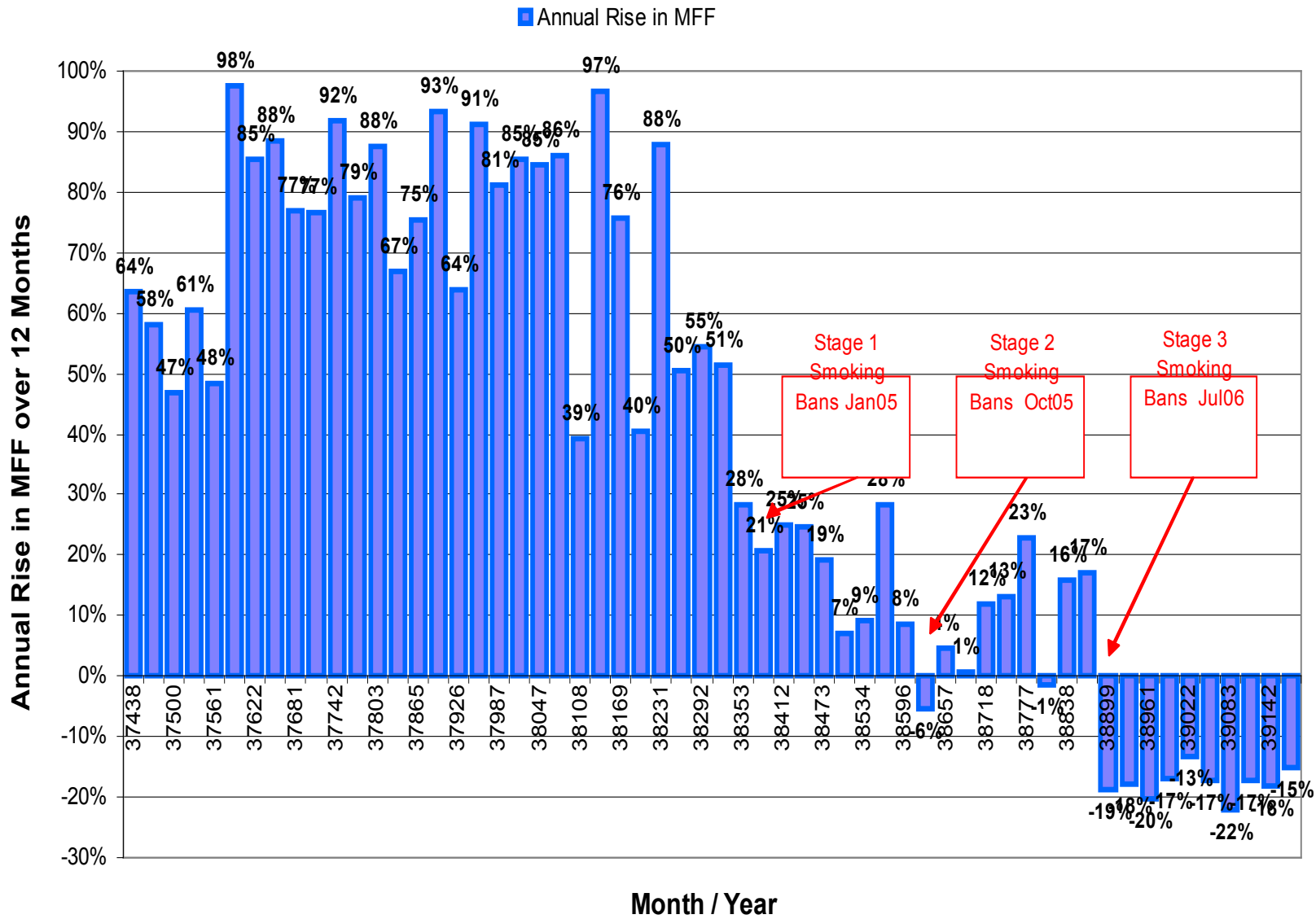
Around 45% of regular club and hotel patrons smoke, and 55% of regular hotel and club gamblers smoke.

This summary contains information on state government gaming revenue declines but not additional federal government tobacco excise revenue declines resulting from minor reduction on tobacco smoking.

Since WA pubs have no poker machines this state is excluded. It is too early to judge gaming revenue declines in NSW, Vic and SA given the timing on total indoor smoking bans.

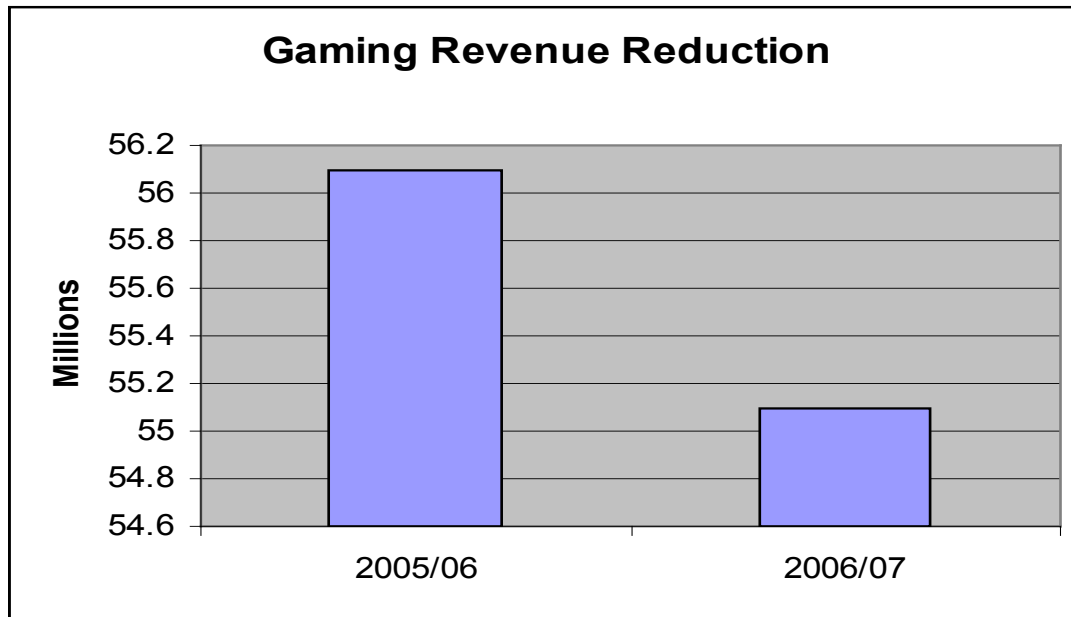
If smoking is banned in outdoor areas associated with pubs, these figures will magnify as gamblers will increasingly opt to smoke and gamble at home, away from responsible gambling safeguards and information pubs provide to help problem gamblers.

Annual Increase in MFF Collection (Compared to 12 months ago)



Tasmania

Gaming tax revenue incorporates gaming machine taxes and interactive gaming taxes. Gaming machines are taxed on the basis of monthly gross revenue, which is defined as monthly gaming machine revenue less amounts paid out in prize money.



ACT

Gaming tax revenue incorporates gaming machine taxes and interactive gaming tax. Gaming machines are taxed on the basis of monthly gross revenue, which is defined as gaming machine revenue less amounts paid out in prize money. Estimated total gaming tax revenue for 2005-06 is \$31.6 million and the forecast for 2006-07 is \$30.193 million. The decrease in revenue is due to an expected reduction in gaming activity following the introduction of smoking bans effective from 1 December 2006.

